

CASORON[®] 4G

Weed and Grass Killer



A BROAD-SPECTRUM PRE-EMERGENT HERBICIDE THAT IS EFFECTIVE AGAINST A WIDE RANGE OF HARD TO CONTROL WEEDS SUCH AS THISTLES, HORSETAIL, NUTSEDGE AND MOST TRIAZINE RESISTANT WEEDS.

Product Information Bulletin

275

GENERAL INFORMATION

A successful weed control program requires the use of herbicides known to be effective on troublesome weeds. **Casoron 4G** easily handles many problem weeds in and around established woody landscape ornamentals, non-crop areas, fruit and nut trees and respective nurseries.

Casoron 4G is a 4% granular formulation of the active ingredient Dichlobenil.

Common Name: Dichlobenil

Class: Benzonitrile

GROUP	20	HERBICIDE	Cell Division Inhibitor
-------	----	-----------	-------------------------

Packaging: 25 lb bags

RESTRICTED ENTRY INTERVAL (REI) AND SIGNAL WORD

REI = **12 hours** Signal Word = **CAUTION**

PERSONAL PROTECTIVE EQUIPMENT (PPE)

- Long-sleeved shirt and long pants
- Chemical-resistant gloves made of any waterproof material
- Shoes plus socks

MODE OF ACTION

Casoron 4G works by inhibiting cellulose synthesis. Optimal performance is obtained as a preventative application. **Casoron 4G** requires 1/2 to 1 inch of overhead watering to thoroughly incorporate granules to a depth of 4-6 inches in the soil. **Casoron 4G** prevents weed seeds, emerging shoots and certain existing weeds from growing through cell division. **Casoron 4G** develops a vapor barrier and is active for 9-10 months after application.

USE SITES

Casoron 4G can be used around established woody landscape ornamentals, non-crop areas, fruit and nut

trees and respective nurseries. **Casoron 4G** is not recommended for use in containerized ornamentals; however, use under pots on bare ground blocks/beds, rock covered ground blocks/beds etc. typically found in nursery production areas, is appropriate.

Casoron 4G can also be used under asphalt for general weed control in roadways and parking lots or recreational areas.

APPLICATION AND RATES

Casoron is applied as a broadcast soil application.

Woody Ornamentals, Shelterbelts

(established and in nurseries)

Apply 100 to 150 pounds per acre. Thoroughly incorporate granules into the surface through watering-in. **VERY IMPORTANT:** See label for specific crop use instructions and limitations.

APPLICATION AND RATES

Under Asphalt Areas.

Apply 250 to 300 pounds per acre. Thoroughly incorporate granules into the surface through watering-in. Treated area should be covered with asphalt as soon as possible.

See label for specific weed control instructions and limitations.

Note: Do not use in enclosed structures; do not allow granules to stick to foliage or to accumulate around the base of trees or shrubs. Do not use on trees or shrubs that have been established for less than 6 months.

See label for specific restrictions and precautions.

KEY WEEDS CONTROLLED:

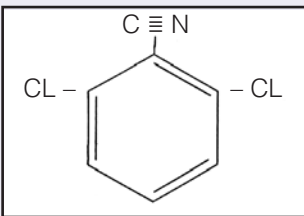
- Grasses

Hard to control weeds like:

- Thistles (has post emergent activity)
- Horsetail
- Nutsedge

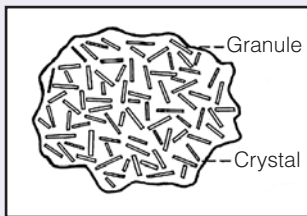
Many other annual and perennial weeds

MODE OF ACTION OF CASORON 4G



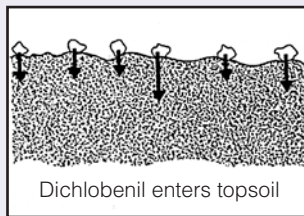
1 CHEMICAL FORMULA

2, 6 dichlorobenzonitrile (dichlobenil) is the active ingredient of Casoron 4G in concentration of 4%. This compound has a very low degree of water-solubility and a relatively high vapor pressure. When exposed to outdoor temperature and humidity conditions, these characteristics aid transportation of the active ingredient into the top 2-4 inches of soil.



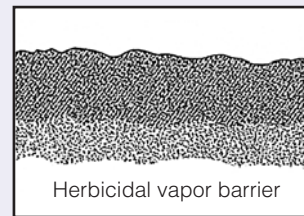
2 CRYSTAL FORM IN THE GRANULES

Casoron 4G granules are formulated by a compacting process; during this process, dichlobenil is homogeneously distributed throughout the pellet in the form of crystals. This successfully prevents undesirable premature evaporation.



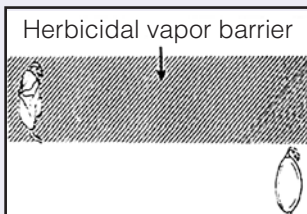
3 ABSORPTION OF DICHLLOBENIL INTO THE GROUND

Once the granules have disintegrated, the active compound, dichlobenil, is absorbed into the top layer of ground with the aid of moisture and temperature. As soon as the active compound is absorbed into the soil, sideways displacement is practically impossible



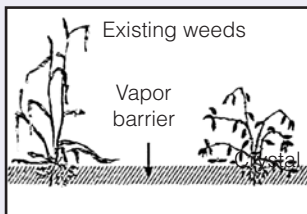
4 FORMATION OF HERBICIDAL BARRIER

Moisture and temperature work together to activate the dichlobenil. A herbicidal barrier, 2-4 inches deep, is formed, and this remains active for almost one whole growth season.



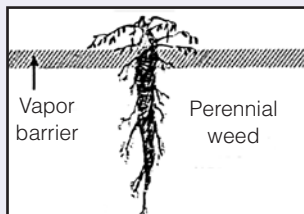
5 WEED SEEDS DIE OFF

No cell division can take place in the dichlobenil herbicidal barrier. Seeds which attempt to germinate in this barrier will die off. This is also the case with shoots which try to grow through the barrier.



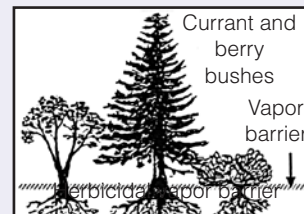
6 EXISTING WEED GROWTH

All existing vegetation like surface-rooted grasses and annual rooted weeds which are situated inside the dichlobenil barrier will be affected and die off within approximately two to three weeks.



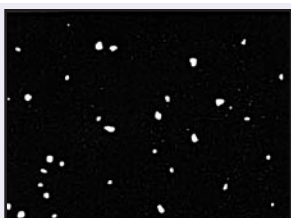
7 PERENNIAL WEEDS IN THE DICHLLOBENIL BARRIER

Certain perennial weeds which undergo a rest period during the winter and begin regrowth within the confines of the dichlobenil barrier, die off similarly.

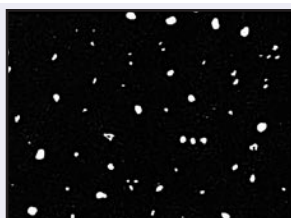


8 WOODY SHRUBS

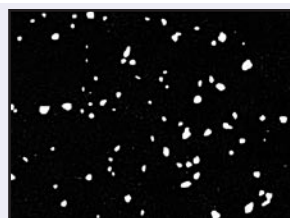
If **Casoron 4G** is applied in accordance with the instructions for use, it will not affect any trees or shrubs with root systems situated *underneath* the herbicidal barrier



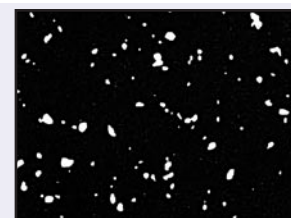
50lb/ac



75lb/ac



100lb/ac



150lb/ac

